

FORMATI

Sizes | Formats | Formate | Tamaños | Форматы

9,5 mm.

90x90 - 35^{7/16}"x35^{7/16}" Naturale

60x120 - 23^{5/8}"x47^{1/4}" Naturale - Tecnica

60x60 - 23^{5/8}"x23^{5/8}" Naturale - Tecnica

30x60 - 11^{13/16}"x23^{5/8}" Naturale - Tecnica

MULTI PRESTIGE BRECCIATO Nat. Brecciato - Tecn. Brecciato

20MM

60x120 - 23^{5/8}"x47^{1/4}" Naturale

60x60 - 23^{5/8}"x23^{5/8}" Naturale

SUPERFICI

Finishes | Finitions | Oberflächen | Superficies | Отделка поверхности

NATURALE

R10 DIN EN 16165 Annex B

B (A+B) DIN EN 16165 Annex A

Wet \geq 0,50 DCOF

\geq 0,40 B.C.R.A.

P3 Pendolo AS 4586

> 36 Low Slip potential Pendolo BS 7976

2 Pendolo UNE 41901

TECNICA | 20MM

R11 DIN EN 16165 Annex B

C (A+B+C) DIN EN 16165 Annex A

Wet \geq 0,65 DCOF

\geq 0,40 B.C.R.A.

P4 Pendolo AS 4586

> 36 Low Slip potential Pendolo BS 7976

3 Pendolo UNE 41901

SHADE VARIATIONS

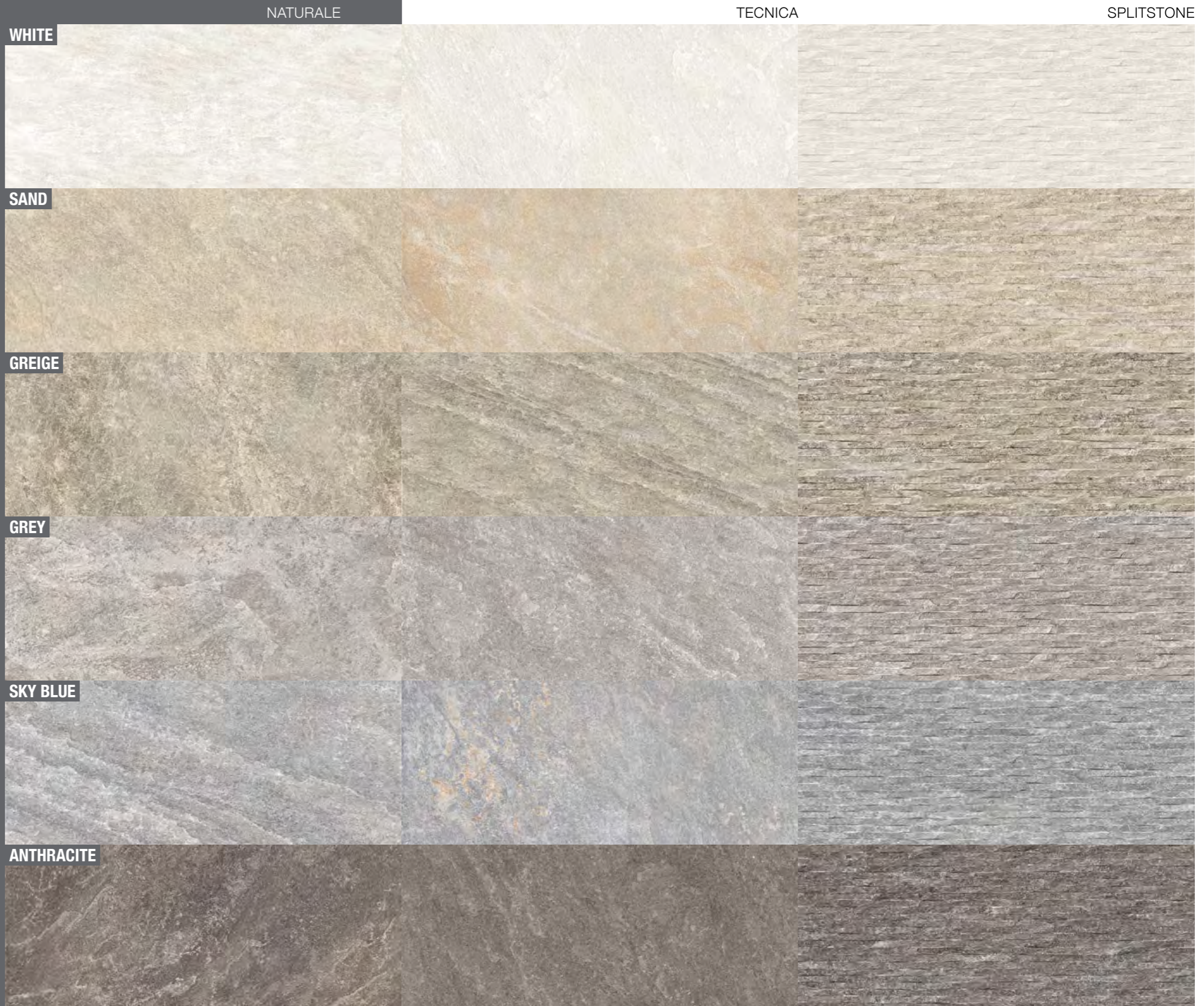
V4 RANDOM

DESTINAZIONI D'USO

Intended uses | Domaines d'application
Zweckbestimmung | Usos previstos | Назначение



19% 60x60 20MM
12% 9,5 mm
10% 60x120 20MM



COLORI E FORMATI

Colours and Sizes | Couleurs et Formats | Farben und Formate | Colores y Tamaños | Цвета и Форматы

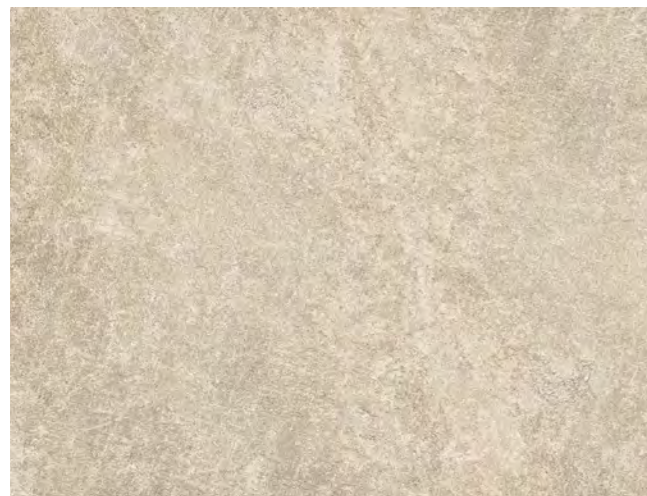
White



Grey



Sand



Sky Blue



Greige

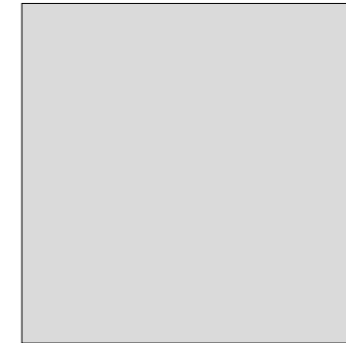


Anthracite

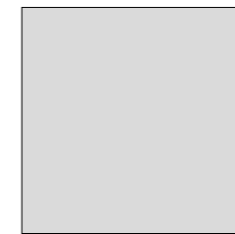


COLORI E FORMATI

Colours and Sizes | Couleurs et Formats | Farben und Formate | Colores y Tamaños | Цвета и Форматы



90x90 - 35^{7/16}"x35^{7/16}"
Naturale Rettificato
 EKVE Greige ● T34
 EKVF Grey ● T34
 EKVG Anthracite ● T34
 Up to 17 Patterns



60x60 - 23^{5/8}"x23^{5/8}"
Naturale Rettificato
 EKL6 White ● T17
 EKL7 Sand ● T17
 EKL8 Greige ● T17
 EKL9 Grey ● T17
 EKUC Sky Blue ● T17
 EKUD Anthracite ● T17
 Up to 34 Patterns

60x60 - 23^{5/8}"x23^{5/8}"
Tecnica Rett. - R11
 EKLT White ● T17
 EKLU Sand ● T17
 EKLV Greige ● T17
 EKLV Grey ● T17
 EKUM Sky Blue ● T17
 EKUN Anthracite ● T17
 Up to 34 Patterns



60x120 - 23^{5/8}"x47^{1/4}"
Naturale Rettificato
 EKL1 White ● T31
 EKL2 Sand ● T31
 EKL3 Greige ● T31
 EKL4 Grey ● T31
 EKU8 Sky Blue ● T31
 EKU9 Anthracite ● T31
 Up to 17 Patterns

60x120 - 23^{5/8}"x47^{1/4}"
Tecnica Rett. - R11
 EKLN White ● T31
 EKLP Sand ● T31
 EKLQ Greige ● T31
 EKLR Grey ● T31
 EKUJ Sky Blue ● T31
 EKUK Anthracite ● T31
 Up to 17 Patterns

60x120 - 23^{5/8}"x47^{1/4}"
Naturale Rettificato
 EL9E White ● T80
 EL9F Sand ● T80
 EL9G Greige ● T80
 EL9H Grey ● T80
 EL9J Sky Blue ● T80
 EL9K Anthracite ● T80
 Up to 17 Patterns

20MM



30x60 - 11^{13/16}"x23^{5/8}"
Naturale Rettificato
 EKLC White ● T14
 EKLD Sand ● T14
 EKLE Greige ● T14
 EKLF Grey ● T14
 EKUF Sky Blue ● T14
 EKUG Anthracite ● T14
 Up to 68 Patterns

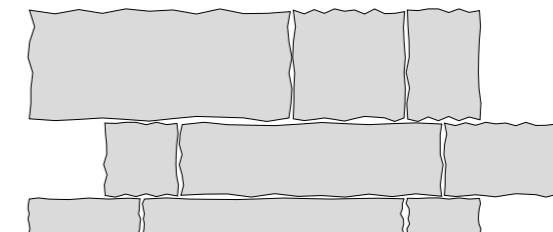
30x60 - 11^{13/16}"x23^{5/8}"
Tecnica Rett. - R11
 EKLY White ● T14
 EK LZ Sand ● T14
 EKMO Greige ● T14
 EKM1 Grey ● T14
 EKUQ Sky Blue ● T14
 EKUR Anthracite ● T14
 Up to 68 Patterns

MULTI PRESTIGE BRECCIATO

Naturale Brecciato
 EL9M White ● T122
 EL9P Sand ● T122
 EL9Q Greige ● T122
 EL9R Grey ● T122
 EL9S Sky Blue ● T122
 EL9T Anthracite ● T122

Tecnica Brecciato - R11
 EL9V White ● T122
 EL9W Sand ● T122
 EL9X Greige ● T122
 EL9Y Grey ● T122
 EL9Z Sky Blue ● T122
 ELA0 Anthracite ● T122

1 pz./pcs 30x70 - 11^{13/16}"x27^{9/16}" 1 pz./pcs 20x70 - 7^{7/8}"x27^{9/16}" 1 pz./pcs 10x70 - 3^{15/16}"x27^{9/16}"
 1 pz./pcs 30x30 - 11^{13/16}"x11^{13/16}" 1 pz./pcs 20x30 - 7^{7/8}"x11^{13/16}" 1 pz./pcs 10x30 - 3^{15/16}"x11^{13/16}"
 1 pz./pcs 30x20 - 11^{13/16}"x7^{7/8}" 1 pz./pcs 20x20 - 7^{7/8}"x7^{7/8}" 1 pz./pcs 10x20 - 3^{15/16}"x7^{7/8}"



TECNICA
Premium Technical Feature

Nella versione tecnica la superficie è particolarmente antiscivolo, tanto da renderla perfetta per spazi esterni, pubblici e privati.
 In the technical version, the surface has outstanding anti-slip properties, making it perfect for public and private outdoor areas.

Verificare l'abbinamento dei toni tra i formati differenti. - Check the colour matching between different sizes.

Vérifier l'assortiment des tonalités entre les différents formats. - Die Kombination der Farbtöne unter den verschiedenen Formaten prüfen.

Comprobar la combinación de los tonos entre los distintos formatos. - Проверьте сочетание тонов у разных форматов.

Si consiglia la posa con fuga 2 mm. - Laying with a 2 mm-joint is recommended. - Pose recommandée avec joints de 2 mm.

Es wird eine Fugenbreite von 2 mm empfohlen. - Se recomienda la colocación con juntas de 2 mm. - Рекомендуется укладка с швом 2 мм.

DECORI

Decors | Decors | Dekore | Decorados | Декоры

SPLITSTONE



60x120 - 23^{5/8}"x47^{1/4}"
EKW4 White Nat. Rett. ● **T37**
 Up to 8 Patterns



30x60 - 11^{13/16}"x23^{5/8}"
EKCW White Nat. Rett. ● **T17**
 Up to 32 Patterns



60x120 - 23^{5/8}"x47^{1/4}"
EKW5 Sand Nat. Rett. ● **T37**
 Up to 8 Patterns



30x60 - 11^{13/16}"x23^{5/8}"
EKWD Sand Nat. Rett. ● **T17**
 Up to 32 Patterns



60x120 - 23^{5/8}"x47^{1/4}"
EKW6 Greige Nat. Rett. ● **T37**
 Up to 8 Patterns



30x60 - 11^{13/16}"x23^{5/8}"
EKWE Greige Nat. Rett. ● **T17**
 Up to 32 Patterns



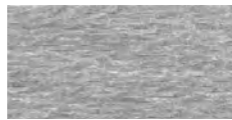
60x120 - 23^{5/8}"x47^{1/4}"
EKW7 Grey Nat. Rett. ● **T37**
 Up to 8 Patterns



30x60 - 11^{13/16}"x23^{5/8}"
EKWF Grey Nat. Rett. ● **T17**
 Up to 32 Patterns



60x120 - 23^{5/8}"x47^{1/4}"
EKW8 Sky Blue Nat. Rett. ● **T37**
 Up to 8 Patterns



30x60 - 11^{13/16}"x23^{5/8}"
EKWG Sky Blue Nat. Rett. ● **T17**
 Up to 32 Patterns



60x120 - 23^{5/8}"x47^{1/4}"
EKW9 Anthracite Nat. Rett. ● **T37**
 Up to 8 Patterns



30x60 - 11^{13/16}"x23^{5/8}"
EKWH Anthracite Nat. Rett. ● **T17**
 Up to 32 Patterns

DECORI

Decors | Decors | Dekore | Decorados | Декоры

MOSAICO 3x3*

Tessere - Chip 2,8x2,8 - 1^{1/8}"x1^{1/8}"



30x30 - 11^{13/16}"x11^{13/16}"
EL1H White Nat. ● **A96**



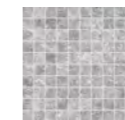
30x30 - 11^{13/16}"x11^{13/16}"
EL1J Sand Nat. ● **A96**



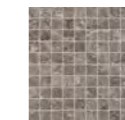
30x30 - 11^{13/16}"x11^{13/16}"
EL1K Greige Nat. ● **A96**



30x30 - 11^{13/16}"x11^{13/16}"
EL1L Grey Nat. ● **A96**

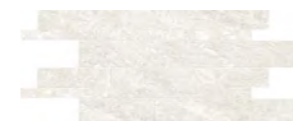


30x30 - 11^{13/16}"x11^{13/16}"
EL1M Sky Blue Nat. ● **A96**



30x30 - 11^{13/16}"x11^{13/16}"
EL1N Anthracite Nat. ● **A96**

LISTELLI SFALSATI*



30x60 - 11^{13/16}"x23^{5/8}"
EL1Q White Nat. ● **A80**



30x60 - 11^{13/16}"x23^{5/8}"
EL1R Sand Nat. ● **A80**



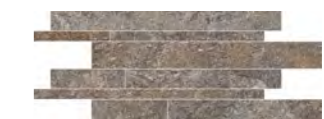
30x60 - 11^{13/16}"x23^{5/8}"
EL1S Greige Nat. ● **A80**



30x60 - 11^{13/16}"x23^{5/8}"
EL1T Grey Nat. ● **A80**



30x60 - 11^{13/16}"x23^{5/8}"
EL1U Sky Blue Nat. ● **A80**



30x60 - 11^{13/16}"x23^{5/8}"
EL1V Anthracite Nat. ● **A80**

* Su rete in fibra - On fibre mesh backing - Sur filet en fibre de verre - Auf Glasfasernetz - Sobre malla de fibra - На волоконной сетке

PEZZI SPECIALI

Trims | Pieces Speciales | Formteile | Piezas Especiales | Специальные Изделия

	Dimensione Size				Fascia di prezzo Price band			
 Battiscopa - Skirting	Nat. Rett. 7x60 - 2 ^{3/4} x23 ^{5/8} Pos. Box 15 - LM x Box 9,00	EL1X	EL1Y	EL1Z	● A11			
	Nat. Rett. 4,6x90 - 1 ^{3/8} x35 ^{7/8} Pos. Box 8 - LM x Box 7,20	-	-	EL26	● A18			
 Gradino - Stair Tread	Nat. Rett. 33x120 - 12 ^{5/8} x47 ^{1/4} Pos. Box 2 - LM x Box 2,40	EL2C	EL2D	EL2E	● A82			
	Tecnica Rett. 33x120 - 12 ^{5/8} x47 ^{1/4} Pos. Box 2 - LM x Box 2,40	EL2K	EL2L	EL2M	● A82			
 Gradone Naturale - Step	Nat. Rett. 33x120x3,2x3,2 12 ^{5/8} x47 ^{1/4} x1 ^{1/4} x1 ^{1/4} Pos. Box 2 - LM x Box 2,40	EL2S	EL2T	EL2U	● A98			
	Tecnica Rett. 33x120x3,2x3,2 12 ^{5/8} x47 ^{1/4} x1 ^{1/4} x1 ^{1/4} Pos. Box 2 - LM x Box 2,40	EL2Z	EL30	EL31	● A98			
 Angolare Dx Sx Corner Tile Right Left	Nat. Rett. 33x120x3,2x3,2 12 ^{5/8} x47 ^{1/4} x1 ^{1/4} x1 ^{1/4} Pos. Box 1 - LM x Box 1,20	Dx Right EL36	Sx Left EL3M	Dx Right EL37	Sx Left EL3N	Dx Right EL38	Sx Left EL3P	● A104
	Tecnica Rett. 33x120x3,2x3,2 12 ^{5/8} x47 ^{1/4} x1 ^{1/4} x1 ^{1/4} Pos. Box 1 - LM x Box 1,20	Dx Right EL3E	Sx Left EL3U	Dx Right EL3F	Sx Left EL3V	Dx Right EL3G	Sx Left EL3W	● A104
	Dimensione Size				Fascia di prezzo Price band			
 Battiscopa - Skirting	Nat. Rett. 7x60 - 2 ^{3/4} x23 ^{5/8} Pos. Box 15 - LM x Box 9,00	EL20	EL21	EL22	● A11			
	Nat. Rett. 4,6x90 - 1 ^{3/8} x35 ^{7/8} Pos. Box 8 - LM x Box 7,20	EL27	-	EL29	● A18			
 Gradino - Stair Tread	Nat. Rett. 33x120 - 12 ^{5/8} x47 ^{1/4} Pos. Box 2 - LM x Box 2,40	EL2F	EL2G	EL2H	● A82			
	Tecnica Rett. 33x120 - 12 ^{5/8} x47 ^{1/4} Pos. Box 2 - LM x Box 2,40	EL2N	EL2P	EL2Q	● A82			
 Gradone Naturale - Step	Nat. Rett. 33x120x3,2x3,2 12 ^{5/8} x47 ^{1/4} x1 ^{1/4} x1 ^{1/4} Pos. Box 2 - LM x Box 2,40	EL2V	EL2W	EL2X	● A98			
	Tecnica Rett. 33x120x3,2x3,2 12 ^{5/8} x47 ^{1/4} x1 ^{1/4} x1 ^{1/4} Pos. Box 2 - LM x Box 2,40	EL32	EL33	EL34	● A98			
 Angolare Dx Sx Corner Tile Right Left	Nat. Rett. 33x120x3,2x3,2 12 ^{5/8} x47 ^{1/4} x1 ^{1/4} x1 ^{1/4} Pos. Box 1 - LM x Box 1,20	Dx Right EL39	Sx Left EL3Q	Dx Right EL3A	Sx Left EL3R	Dx Right EL3C	Sx Left EL3S	● A104
	Tecnica Rett. 33x120x3,2x3,2 12 ^{5/8} x47 ^{1/4} x1 ^{1/4} x1 ^{1/4} Pos. Box 1 - LM x Box 1,20	Dx Right EL3H	Sx Left EL3X	Dx Right EL3J	Sx Left EL3Y	Dx Right EL3K	Sx Left EL3Z	● A104

Pezzi speciali 20 mm su richiesta - 20mm trims available on request - pièces spéciales 20mm (sur demande) - formteile 20mm auf anfrage erhältlich - piezas especiales 20mm disponibles bajo pedido - специальные изделия 20mm по запросу

Dry - Pressed Ceramic Tiles ISO 13006 Annex G - UNI EN 14411 Annex G - Bla UGL

CARATTERISTICHE TECNICHE

Technical Features - Caracteristiques Techniques - Technische Eigenschaften
Technische Eigenschaften - Caracteristicas Tecnicas - Технические Характеристики

NORMA

Standard - Norme
Norm - Norma - Норма

VALORI

Value - Valeur
Vorgabe - Valor - Средние

	ASSORBIMENTO D'ACQUA (VALORE MEDIO IN %) Water absorption (Average value expressed in %) - Absorption d'eau (Valeur moyenne en %) Wasseraufnahme (Durchschnittswert in %) - Absorción de agua (Valor medio en %) Поглощение воды	UNI EN ISO 10545/3	CONFORME
		ASTM C373	COMPLIANT
	RESISTENZA ALLA FLESSIONE Modulus of rupture - Resistance a la flexion - Biegefestigkeit Resistencia a la flexion - Прочность на изгиб	SPESORE	9,5 mm 20MM
		UNI EN ISO 10545/4	≥ 45 N/mm ² ≥ 45 N/mm ²
	FORZA DI ROTTURA Breaking strength - Résistance à la rupture - Bruchlast Resistencia a la rotura - Разрывное усилие	UNI EN ISO 10545/4	≥ 2000 N ≥ 12000 N
		ASTM C648	400 Lbs 2500 Lbs
	RESISTENZA AL GELO Frost resistance - Résistance au gel - Frostbeständigkeit Resistencia a las heladas - Морозостойкость	UNI EN ISO 10545/12	CONFORME
		ASTM C1026	UNAFFECTED
	RESISTENZA CHIMICA AD ALTE E BASSE CONCENTRAZIONI DI ACIDI E BASI Chemical resistance to high and low acid and basic concentrations Résistance chimique aux hautes et basses concentrations d'acides et de bases Chemikalienfestigkeit bei hohen und niedrigen Konzentrationen von Säuren und Basen Resistencia química con concentraciones altas y bajas de ácidos y bases Химическая стойкость к высоким и низким концентрациям кислот и щелочей	UNI EN ISO 10545/13	A - LA - HA
		ASTM C-650	UNAFFECTED
	RESISTENZA ALLE MACCHIE Stain resistance - Résistance aux taches - Fleckenbeständigkeit Resistencia a las manchas - Стойкость к образованию пятен	UNI EN ISO 10545/14	5
	COEFFICIENTE DI ATTRITO Slip resistance Coefficient de glissement Rutschfestigkeit Barfußbereich Coeficiente de atrito medio Козффициент трения		NAT. TECNICA - 20MM
		DIN EN 16165 Annex B	R10 R11
	DIN EN 16165 Annex A	B (A+B) C (A+B+C)	
	ANSI A326.3:2017 DCOF	WET ≥ 0,50 WET ≥ 0,65	
	B.C.R.A. D.M. N. 236 14/6/89	> 0,40 > 0,40	
	AS 4586-2013 Anexo A	P3 P4	
	BS 7976-2: 2002 BSEN13036-4:2011 Pendulum testers	> 36 > 36 Low Slip potential Low Slip potential	
	UNE 41901:2017 EX DB SUA (actual)	2 3	

Per maggiori chiarimenti sui dati tecnici e sulla garanzia consultare il catalogo generale in vigore. - For further information on technical specifications, please consult our up-dated general catalogue. - Pour toutes informations supplémentaires sur les données techniques et sur les garanties, veuillez consulter le catalogue general en vigueur. - Für weitere Informationen über technische Daten und Garantie beziehen sie sich bitte auf den aktuellen Gesamtkatalog. - Para ulteriores informaciones sobre los datos tecnicos y la garantia, vease el catalogo general en vigor. - Более подробную информацию о технических данных и гарантии смотрите в действующем сводном катал.



* La lista completa e aggiornata dei prodotti certificati è visionabile sul sito www.cstb.fr. Per qualsiasi ulteriore informazione contattate Emilceramica Group. - The full, up-to-date list of certified products can be viewed at www.cstb.fr. Please contact the Emilceramica Group for any further information. - La liste complète et à jour des produits certifiés peut être consultée sur le site www.cstb.fr. Pour tout renseignement complémentaire, veuillez contacter Emilceramica Group. - Die komplette und aktualisierte Liste der zertifizierten Produkte ist im Internet auf www.cstb.fr einsehbar. Für ausführliche Informationen kontaktieren Sie bitte die Emilceramica Group. - La lista completa y actualizada de los productos certificados se puede consultar accediendo al sitio web www.cstb.fr. Para más información pueden ponerse en contacto con Emilceramica Group.

Formato Size Format Format Tamaño Формат cm	Spessore Thickness Épaisseur Stärke Espesor Толщина mm	Pz. x Mq. Pieces x Sqm Pcs / M ² Stk. x Qm Pzs x Mc. Шт x кв.м.	Pz. x Scat. Pieces x Box Pcs / Bte Stk. x Krt. Pzs x Caja Шт x Кор.	Mq. x Scat. Sqm x Box M ² / Bte Qm x Krt. Mc. x Caja Кв.м. x Кор.	Peso x Scat. Weight x Box Poids / Bte Gewicht x Krt. Peso x Caja Вес x Кор. Kg	Scat. x Pal. Boxes x Pal. Bte / Pal. Krt. x Pal. Cajas x Pal. Кор. x Подд.	Mq. x Pal. Sqm x Pal. M ² / Pal. Qm x Pal. Mc. x Pal. Кв.м x Подд.	Peso x Pal. Weight x Pal. Poids / Pal. Gewicht x Pal. Peso x Pal. Вес x Подд. Kg
90x90 Naturale	9,5	1,23	2	1,620	35,64	24	38,88	855
60x120 Naturale - Tecnica	9,5	1,39	2	1,440	31,68	36	51,84	1140
60x60 Naturale - Tecnica	9,5	2,78	3	1,080	23,76	40	43,20	950
30x60 Naturale - Tecnica	9,5	5,56	6	1,080	23,76	48	51,84	1140
Multi Prestige Brecciato	9,5	-	9	0,720	15,84	36	25,92	570
60x120 Dec. Splitstone Naturale	9,5	1,39	2	1,440	31,68	36	51,84	1140
30x60 Dec. Splitstone Naturale	9,5	5,56	5	0,900	19,80	48	43,20	950
30x60 Listelli sfalsati Naturale	9,5	5,56	4	0,720	15,80	30	21,60	474
30x30 Mosaico 3X3 Naturale	9,5	11,11	5	0,450	8,73	60	27,00	524
60x120 20MM Naturale	20	1,39	1	0,720	33,12	36	25,92	1192