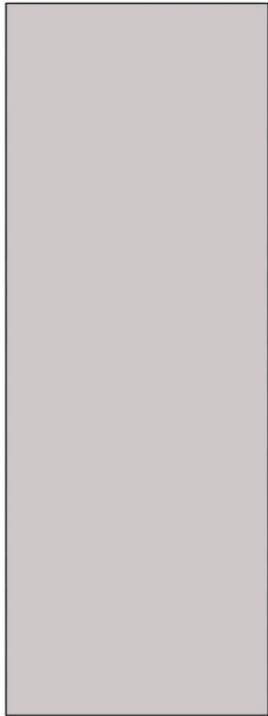


MARBLE & CEMENT slabs

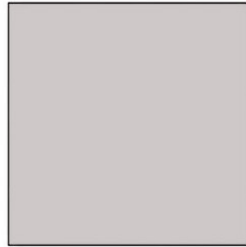
Polished or Honed
non-rectified



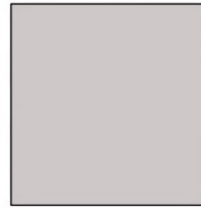
305x125cm - 120^{5/64}"x49^{7/32}"
 2cm or 3cm

MARBLE & CEMENT tiles

Polished, Honed R9 or R10,
Sandblasted R11, Bush Hammered R11 or R12
rectified, non-beveled - 2mm grout joint



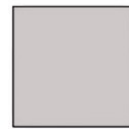
120x120cm - 47^{1/4}"x 47^{1/4}"
 3cm



100x100cm - 39^{3/8}"x 39^{3/8}"
 3cm



60x120cm - 23^{5/8}"x47^{1/4}"
 3cm



60x60cm - 23^{5/8}"x 23^{5/8}"
 2cm



30x60cm - 11^{13/16}"x23^{5/8}"
 2cm

MARBLE & CEMENT Textures

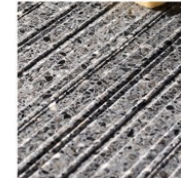
Rigato Quadro



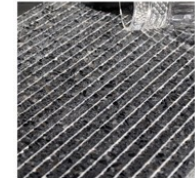
Gessato



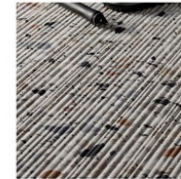
Rigato



Piramide



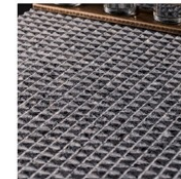
Canneto



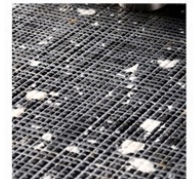
Ondulato



Piramide Quadro



Inciso Quadro



NSTONE

Michael Montorsi

T: (630) 539 - 4470

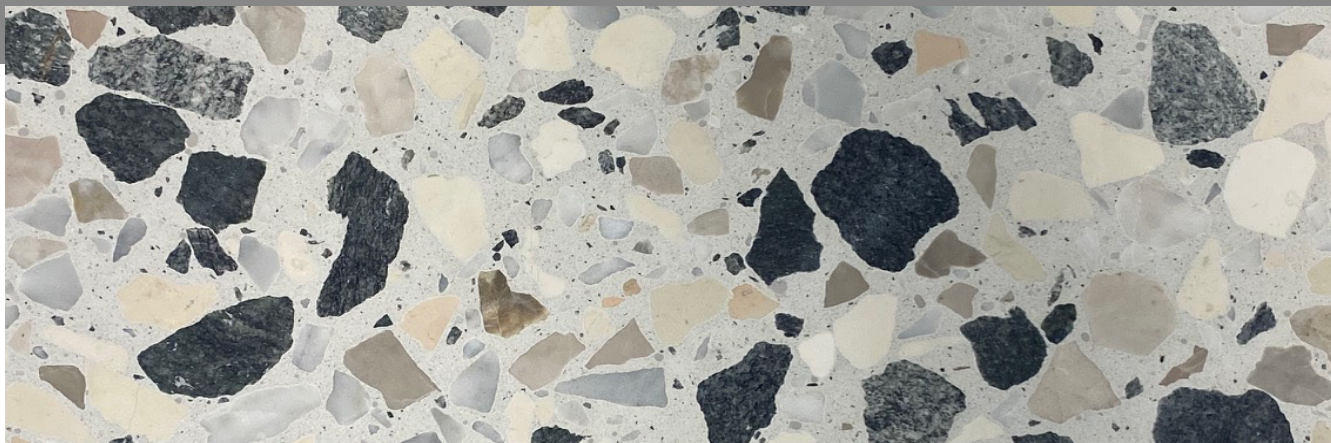
e-mail: mmontorsi@M2ilttd.com

nstone srl
Via Industria, 19
30010 Camponogara
VENEZIA _ ITALY
www.nstone.it
info@nstone.it

NSTONE

technical data sheet SCHEMA TECNICA

1020.91 MARATEA 30T



AGGLOMERATO MARMO CEMENTO_ GRANULOMETRIA 15/35 MM
MARBLE CEMENT BASED AGGREGATE _ CHIPS SIZE 15/35 MM

	RESISTENZA ALLA FLESSIONE FLEXION RESISTANCE	DIN EN 13748-1	> 5N/MM2	9,2 N/MM2
	RESISTENZA ALL'ABRASIONE ABRASION RESISTANCE	DIN EN 13748-1	<30 CM3/50 CM3	15,4 CM3/50 CM3
	ASSORBIMENTO ACQUA WATER ABSORPTION	DIN EN 13748-1	<8%	3,0 %
	RESISTENZA ALLO SCIVOLAMENTO SLIP RESISTANCE	DIN 51130	DIN 51130	R9 - R10 - R11
	RESISTENZA AL FUOCO FIRE RESISTANCE	DIN EN 13748-1	A1 NON INFIAMMABILE NOT FLAMMABLE	A1 NON INFIAMMABILE NOT FLAMMABLE
	PESO SPECIFICO SPECIFIC WEIGHT			2600 KG/M3