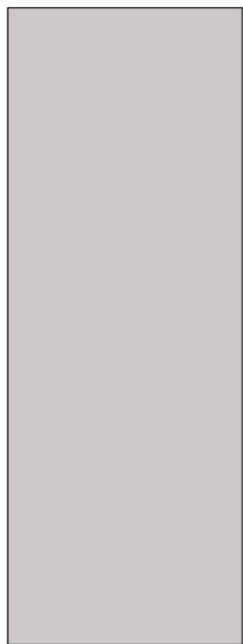
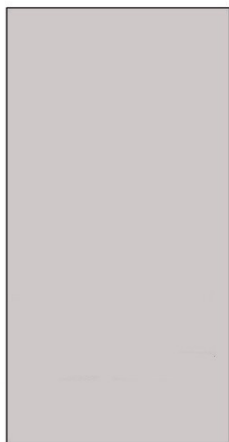


MARBLE & RESIN slabs

Polished or Honed
non-rectified



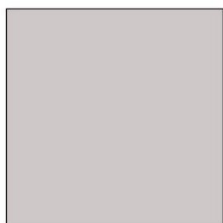
125x305cm - 49^{7/32}"x120^{5/16}"
 2cm or 3cm



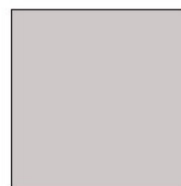
123x183cm - 48^{1/2}"x72"
 2cm or 3cm

MARBLE & RESIN tiles

Polished, Honed R9 or R10,
rectified, non-beveled - 2mm grout joint



120x120cm - 47^{1/4}"x 47^{1/4}"
 1.2cm or 2cm or 3cm



100x100cm - 39^{3/8}"x 39^{3/8}"
 1.2cm or 2cm or 3cm



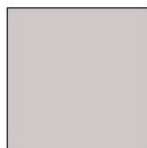
60x120cm - 23^{5/8}"x47^{1/4}"
 1.2cm or 2cm or 3cm



60x60cm - 23^{5/8}"x 23^{5/8}"
 1.2cm or 2cm



30x60cm - 11^{13/16}"x23^{5/8}"
 1.2cm or 2cm



80x80cm - 31^{1/2}"x 31^{1/2}"
 1.2cm or 2cm or 3cm



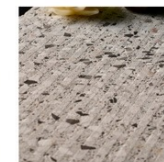
80x40cm - 31^{1/2}"x 15^{1/2}"
 1.2cm or 2cm or 3cm

MARBLE & RESIN Textures

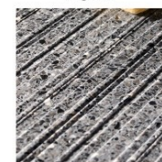
Rigato Quadro



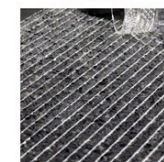
Gessato



Rigato



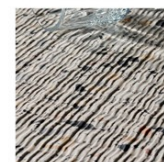
Piramide



Canneto



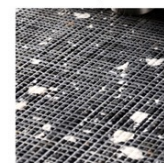
Ondulato



Piramide Quadro



Inciso Quadro



NSTONE

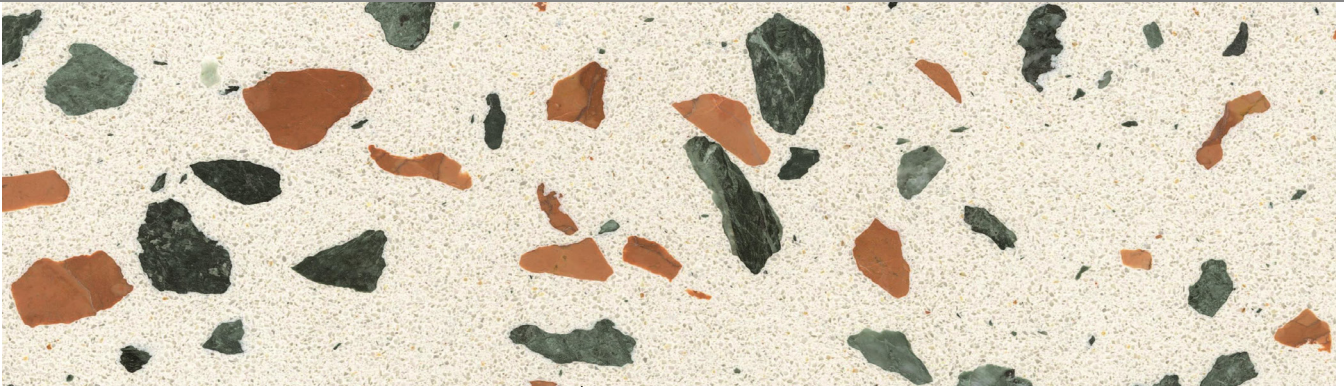
Michael Montorsi
 T: (630) 539 - 4470
 e-mail: mmontorsi@M2ilttd.com

nstone srl
Via Industria, 19
30010 Camponogara
VENEZIA _ ITALY
www.nstone.it
info@nstone.it






NSTONE

technical data sheet SCHEMA TECNICA

1044.06 SALEMI 15R2



engineered marble produced with marble, calcium carbonate and polyester resin

	RESISTENZA ALLA FLESSIONE FLEXURAL STRENGTH	EN 14617-2	>12 MPA	
	RESISTENZA ALL'ABRASIONE ABRASION RESISTANCE	EN 14617-4	33-41 MM	
	ASSORBIMENTO ACQUA WATER ABSORPTION	EN 14617-1	< 1.00%	
	VALORI DEL PENDULUM TEST PENDULUM TEST VALUE	BS7976-2:2002 SLIDER 96	>0,42	HONED 200
	RESISTENZA AL FUOCO FIRE RESISTANCE	EN13501-1	A2 FL -S1	
	PESO SPECIFICO SPECIFIC WEIGHT	EN 14617-1	2400-2650	KG/M3
	RESIS. ALLA COMPRESIONE COMPRESSIVE STRENGTH	EN 14231	>80 MPA 35 (DRY) >= 3 (WET)	

