

TREND

concrete / wood / majolica



PRODUCT CERTIFIED FOR LOW CHEMICAL EMISSIONS: ULCDM/CG UL 2818

FORMATI

Sizes | Formats | Formate | Tamaños | Форматы

10 mm.

90x180 - 35^{7/16}"x70^{7/8}" Naturale R10

9,5 mm.

120x120 - 47^{1/4}"x47^{1/4}" Naturale R10

60x120 - 23^{5/8}"x47^{1/4}" Naturale R10

20x120 - 7^{7/8}"x47^{1/4}" Naturale R10

90x90 - 35^{7/16}"x35^{7/16}" Naturale R10

60x60 - 23^{5/8}"x23^{5/8}" Naturale R10

30x60 - 11^{13/16}"x23^{5/8}" Naturale R10

SUPERFICI

Finishes | Finitions | Oberflächen | Superficies | Отделка поверхности

NATURALE

R10 DIN EN 16165 Annex B

B (A+B) DIN EN 16165 Annex A

Wet \geq 0,50 DCOF

> 0,40 B.C.R.A.

P2 Pendolo AS 4586

< 36 Moderate Slip potential - Slider 96 Pendolo BS 7976

2 Pendolo UNE 41901

SHADE VARIATIONS



DESTINAZIONI D'USO

Intended uses | Domaines d'application
Zweckbestimmung | Usos previstos | Назначение



15% 9,5 / 10 mm
valori medi - average values



UPEC



UPEC-D+
Wood 20x120

BROWN CONCRETE

TAUPE CONCRETE

SAND CONCRETE

IVORY CONCRETE

WHITE CONCRETE

GREY CONCRETE

SMOKE CONCRETE

BLACK CONCRETE

TAUPE WOOD

SAND WOOD

GREY WOOD

SMOKE WOOD

Dry-Pressed Ceramic Tiles ISO 13006 Annex G - UNI EN 14411 Annex G - Bla UGL

CARATTERISTICHE TECNICHE


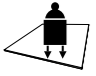





Technical Features - Caracteristiques Techniques - Technische Eigenschaften
Technische Eigenschaften - Caracteristicas Tecnicas - Технические Характеристики

NORMA

Standard - Norme
Norm - Norma - Норма

VALORI

Value - Valeur
Vorgabe - Valor - Средние

	ASSORBIMENTO D'ACQUA (VALORE MEDIO IN %) Water absorption (Average value expressed in %) - Absorption d'eau (Valeur moyenne en %) Wasseraufnahme (Durchschnittswert in %) - Absorción de agua (Valor medio en %) Поглощение воды	UNI EN ISO 10545/3	CONFORME	
		ASTM C373	COMPLIANT	
	RESISTENZA ALLA FLESSIONE Modulus of rupture - Resistance a la flexion - Biegefestigkeit Resistencia a la flexion - Прочность на изгиб	SPESSORE	9,5 mm	
		UNI EN ISO 10545/4	≥ 45 N/mm ²	
	FORZA DI ROTTURA Breaking strength - Résistance à la rupture - Bruchlast Resistencia a la rotura - Разрывное усилие	UNI EN ISO 10545/4	≥ 2000 N	
		ASTM C648	400 Lbs	
	RESISTENZA AL GELO Frost resistance - Résistance au gel - Frostbeständigkeit Resistencia a las heladas - Морозостойкость	UNI EN ISO 10545/12	CONFORME	
		ASTM C1026	UNAFFECTED	
	RESISTENZA CHIMICA AD ALTE E BASSE CONCENTRAZIONI DI ACIDI E BASI Chemical resistance to high and low acid and basic concentrations Résistance chimique aux hautes et basses concentrations d'acides et de bases Chemikalienfestigkeit bei hohen und niedrigen Konzentrationen von Säuren und Basen Resistencia química con concentraciones altas y bajas de ácidos y bases Химическая стойкость к высоким и низким концентрациям кислот и щелочей	UNI EN ISO 10545/13	A - LA - HA	
		ASTM C-650	UNAFFECTED	
	RESISTENZA ALLE MACCHIE Stain resistance - Résistance aux taches - Fleckenbeständigkeit Resistencia a las manchas - Стойкость к образованию пятен	UNI EN ISO 10545/14	5	
	COEFFICIENTE DI ATTRITO Slip resistance Coefficient de glissement Rutschfestigkeit Barfußbereich Coeficiente de atrito medio Коэффициент трения	CONCRETE/WOOD MAJOLICA		
		DIN EN 16165 ANnex B	R10	-
		DIN EN 16165 ANnex A	B (A+B)	-
		ANSI A326.3:2017 DCOF	WET ≥ 0,50	-
		B.C.R.A. D.M. N. 236 14/6/89	> 0,40	-
		AS 4586-2013 Anexo A	P2	-
		BS 7976-2: 2002	< 36	-
		BSEN13036-4:2011 Pendulum testers	Moderate Slip potential	-
		UNE 41901:2017 EX DB SUA (actual)	2	-

Per maggiori chiarimenti sui dati tecnici e sulla garanzia consultare il catalogo generale in vigore. - For further information on technical specifications, please consult our up-dated general catalogue.- Pour toutes informations supplémentaires sur les données techniques et sur les garanties, veuillez consulter le catalogue general en vigueur. - Für weitere Informationen über technische Daten und Garantie beziehen sie sich bitte auf den aktuellen Gesamtkatalog. - Para ultteriores informaciones sobre los datos tecnicos y la garantia, vease el catalogo general en vigor. - Более подробную информацию о технических данных и гарантии смотрите в действующем сводном катал.



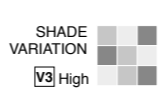
PRODUCT CERTIFIED FOR LOW CHEMICAL EMISSIONS: UL.COM/GG UL 2818



放射性水平A类



15% 9,5 mm
valori medi - average values



* La lista completa e aggiornata dei prodotti certificati è visionabile sul sito www.cstb.fr. Per qualsiasi ulteriore informazione contattare Emilceramica Group. - The full, up-to-date list of certified products can be viewed at www.cstb.fr. Please contact the Emilceramica Group for any further information. - La liste complète et à jour des produits certifiés peut être consultée sur le site www.cstb.fr. Pour tout renseignement complémentaire, veuillez contacter Emilceramica Group. - Die komplette und aktualisierte Liste der zertifizierten Produkte ist im Internet auf www.cstb.fr einsehbar. Für ausführliche Informationen kontaktieren Sie bitte die Emilceramica Group. - La lista completa y actualizada de los productos certificados se puede consultar accediendo al sitio web www.cstb.fr. Para más información pueden ponerse en contacto con Emilceramica Group.

COLORI E FORMATI

Colours and Sizes | Couleurs et Formats | Farben und Formate | Colores y Tamaños | Цвета и Форматы

Brown Concrete | Wood



Taupe Concrete | Wood



Sand Concrete | Wood



Ivory Concrete | Wood

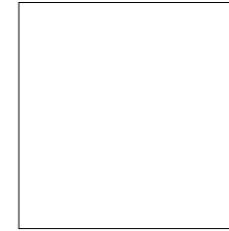


Si consiglia la posa con fuga 2 mm. - Laying with a 2 mm-joint is recommended. - Pose recommandée avec joints de 2 mm.
Es wird eine Fugenbreite von 2 mm empfohlen. - Se recomienda la colocación con juntas de 2 mm. - Рекомендуется укладка с швом 2 мм.

COLORI E FORMATI

Colours and Sizes | Couleurs et Formats | Farben und Formate | Colores y Tamaños | Цвета и Форматы

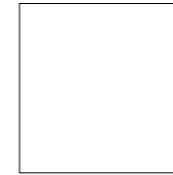
9,5 mm.



Concrete Naturale R10 Rett.
120x120 - 47^{1/4}"x47^{1/4}"
E400 Taupe ● T59
E3ZX Sand ● T59
E3ZW Ivory ● T59



Concrete Naturale R10 Rett.
60x120 - 23^{5/8}"x47^{1/4}"
EC8V Brown ● T31
EC8W Taupe ● T31
EC8T Sand ● T31
EC8S Ivory ● T31



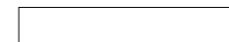
Concrete Naturale R10 Rett.
90x90 - 35^{7/16}"x35^{7/16}"
E407 Brown ● T31
E408 Taupe ● T31
E405 Sand ● T31
E404 Ivory ● T31



Concrete Naturale R10 Rett.
60x60 - 23^{5/8}"x23^{5/8}"
E41H Brown ● T17
E41J Taupe ● T17
E41F Sand ● T17
E41E Ivory ● T17



Concrete Naturale R10 Rett.
30x60 - 11^{13/16}"x23^{5/8}"
EAP4 Brown ● T14
E41R Taupe ● T14
E41P Sand ● T14
E41N Ivory ● T14



Wood Naturale R10 Rett.
20x120 - 7^{7/8}"x47^{1/4}"
E419 Taupe ● T23
E416 Sand ● T23

Verificare l'abbinamento dei toni tra i formati differenti. - Check the colour matching between different sizes.
Vérifier l'assortiment des tonalités entre les différents formats. - Die Kombination der Farbtöne unter den verschiedenen Formaten prüfen.
Comprobar la combinación de los tonos entre los distintos formatos. - Проверьте сочетание тонов у разных форматов.

COLORI E FORMATI

Colours and Sizes | Couleurs et Formats | Farben und Formate | Colores y Tamaños | Цвета и Форматы

White Concrete | Wood



Grey Concrete | Wood



Smoke Concrete | Wood



Black Concrete | Wood



Si consiglia la posa con fuga 2 mm. - Laying with a 2 mm-joint is recommended. - Pose recommandée avec joints de 2 mm.
Es wird eine Fugenbreite von 2 mm empfohlen. - Se recomienda la colocación con juntas de 2 mm. - Рекомендуется укладка с швом 2 мм.

COLORI E FORMATI

Colours and Sizes | Couleurs et Formats | Farben und Formate | Colores y Tamaños | Цвета и Форматы

10 mm.



Concrete Naturale R10 Rett.
90x180 - 35^{7/16}"x70^{7/8}"
EGF6 White ● T67

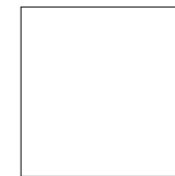
9,5 mm.



Concrete Naturale R10 Rett.
120x120 - 47^{1/4}"x47^{1/4}"
E3ZV White ● T59
E401 Grey ● T59
E402 Black ● T59



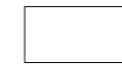
Concrete Naturale R10 Rett.
60x120 - 23^{5/8}"x47^{1/4}"
EC8R White ● T31
EC8X Grey ● T31
EC8U Smoke ● T31
EC8Y Black ● T31



Concrete Naturale R10 Rett.
90x90 - 35^{7/16}"x35^{7/16}"
E403 White ● T31
E409 Grey ● T31
E406 Smoke ● T31
E40A Black ● T31



Concrete Naturale R10 Rett.
60x60 - 23^{5/8}"x23^{5/8}"
E41D White ● T17
E41K Grey ● T17
E41G Smoke ● T17
E41L Black ● T17



Concrete Naturale R10 Rett.
30x60 - 11^{13/16}"x23^{5/8}"
E41M White ● T14
E41S Grey ● T14
E41Q Smoke ● T14
EAP5 Black ● T14



Wood Naturale R10 Rett.
20x120 - 7^{7/8}"x47^{1/4}"
E41A Grey ● T23
E417 Smoke ● T23

Verificare l'abbinamento dei toni tra i formati differenti. - Check the colour matching between different sizes.
Vérifier l'assortiment des tonalités entre les différents formats. - Die Kombination der Farbtöne unter den verschiedenen Formaten prüfen.
Comprobar la combinación de los tonos entre los distintos formatos. - Проверьте сочетание тонов у разных форматов.

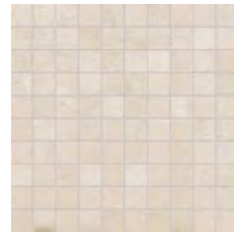
TR3ND

DECORI

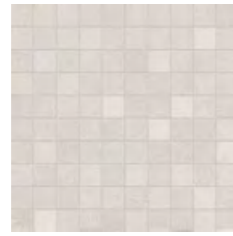
Decors | Decors | Dekore | Decorados | Декоры

MOSAICO 3X3* Naturale R10

Tessera - Chip 2,8x2,8 - 1^{1/8}"x1^{1/8}"



30x30 - 11^{13/16}"x11^{13/16}"
EAVT Ivory ● A96



30x30 - 11^{13/16}"x11^{13/16}"
EAVS White ● A96



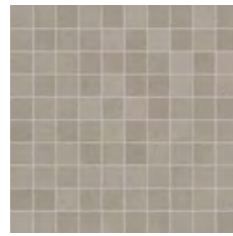
30x30 - 11^{13/16}"x11^{13/16}"
EAVU Sand ● A96



30x30 - 11^{13/16}"x11^{13/16}"
EAVY Grey ● A96



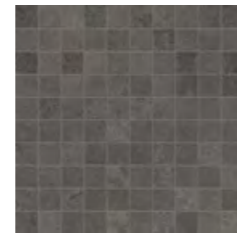
30x30 - 11^{13/16}"x11^{13/16}"
EAVX Taupe ● A96



30x30 - 11^{13/16}"x11^{13/16}"
EAVV Smoke ● A96



30x30 - 11^{13/16}"x11^{13/16}"
EAVW Brown ● A96



30x30 - 11^{13/16}"x11^{13/16}"
EAVZ Black ● A96

* Su rete in fibra - On fibre mesh backing - Sur filet en fibre de verre - Auf Glasfasernetz - Sobre malla de fibra - На волоконной сетке

TR3ND

DECORI

Decors | Decors | Dekore | Decorados | Декоры

LISTELLI SFALSATI* Naturale R10



30x60 - 11^{13/16}"x23^{5/8}"
EAUQ Ivory ● A80



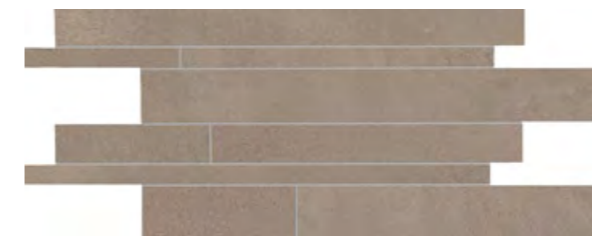
30x60 - 11^{13/16}"x23^{5/8}"
EAUP White ● A80



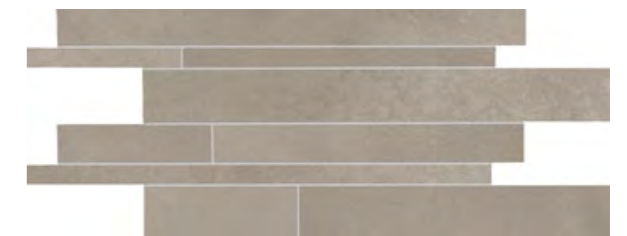
30x60 - 11^{13/16}"x23^{5/8}"
EAUR Sand ● A80



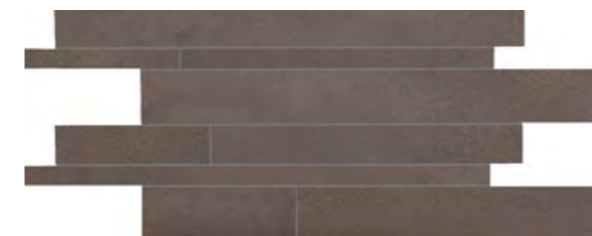
30x60 - 11^{13/16}"x23^{5/8}"
EAUV Grey ● A80



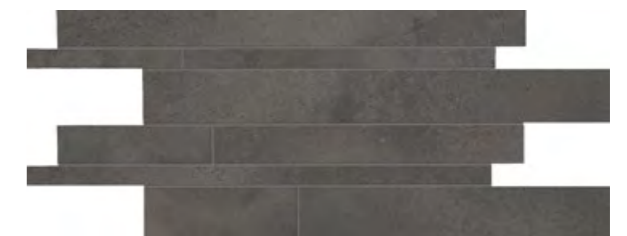
30x60 - 11^{13/16}"x23^{5/8}"
EAUU Taupe ● A80



30x60 - 11^{13/16}"x23^{5/8}"
EAUS Smoke ● A80



30x60 - 11^{13/16}"x23^{5/8}"
EAUT Brown ● A80



30x60 - 11^{13/16}"x23^{5/8}"
EAUW Black ● A80

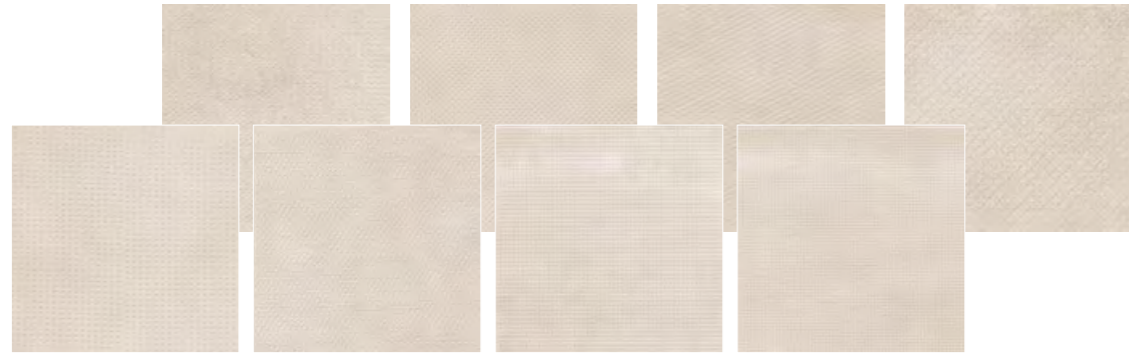
* Su rete in fibra - On fibre mesh backing - Sur filet en fibre de verre - Auf Glasfasernetz - Sobre malla de fibra - На волоконной сетке

TR3ND

DECORI

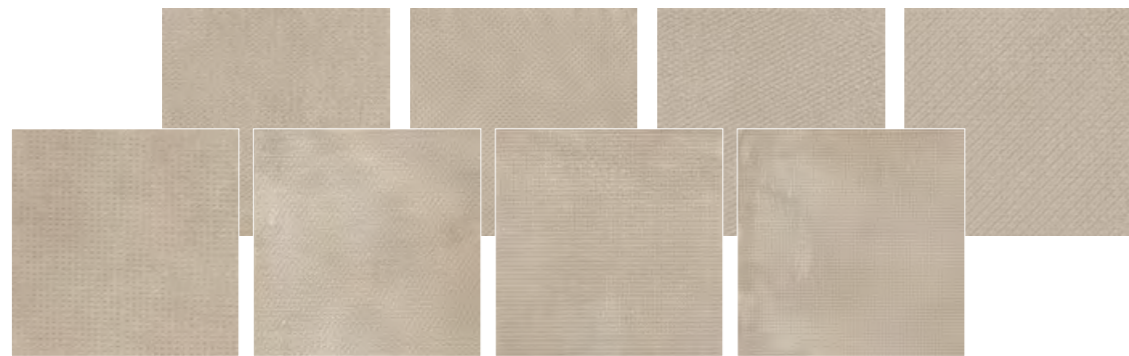
Decors | Decors | Dekore | Decorados | Декоры

DECORO NEEDLE Naturale R10 Rett.



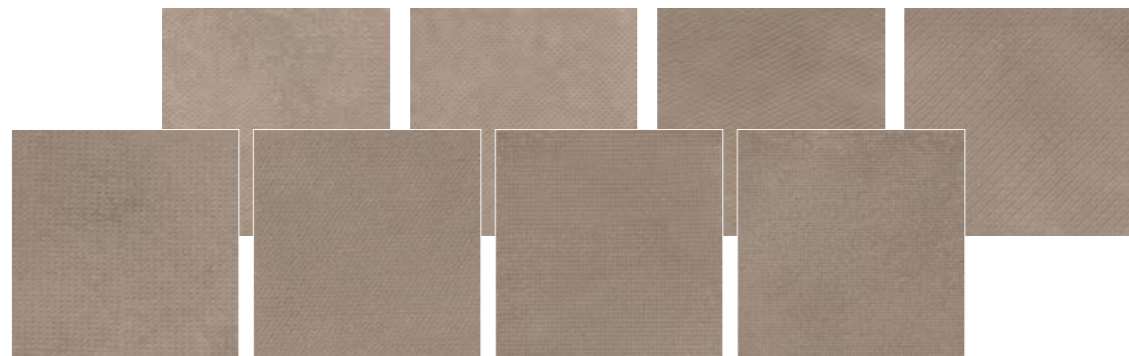
30x30 - 11¹³/₁₆"x11¹³/₁₆"
E45V Ivory

● T75



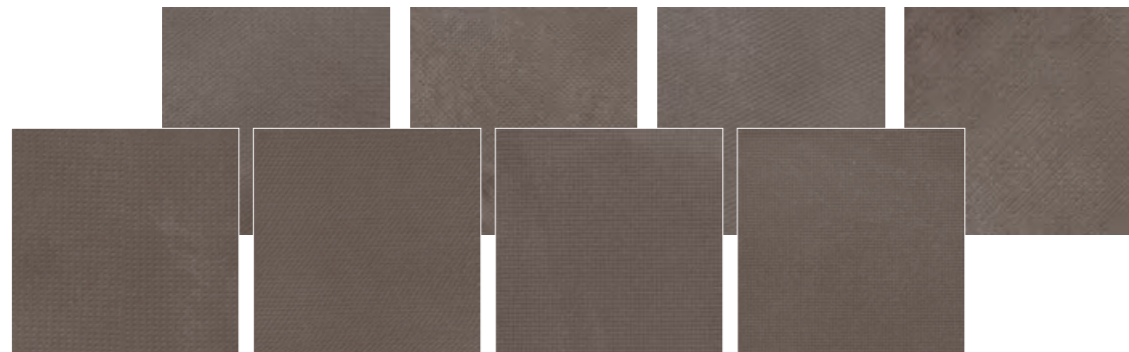
30x30 - 11¹³/₁₆"x11¹³/₁₆"
E45W Sand

● T75



30x30 - 11¹³/₁₆"x11¹³/₁₆"
E45Z Taupe

● T75



30x30 - 11¹³/₁₆"x11¹³/₁₆"
E45Y Brown

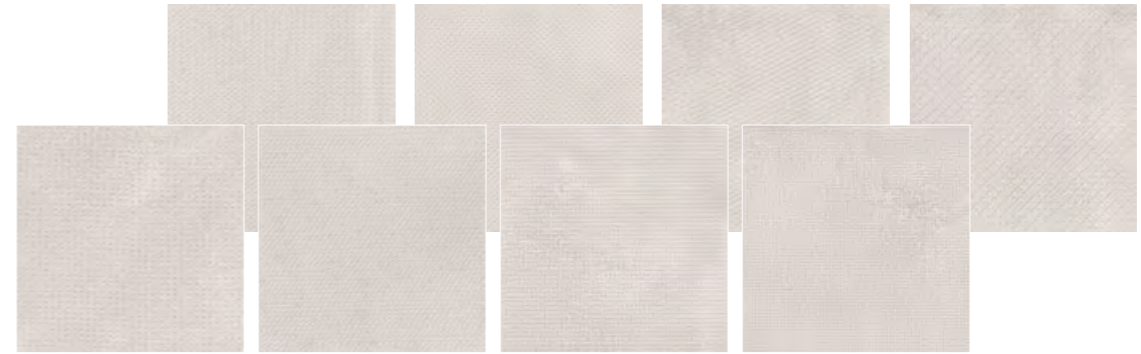
● T75

TR3ND

DECORI

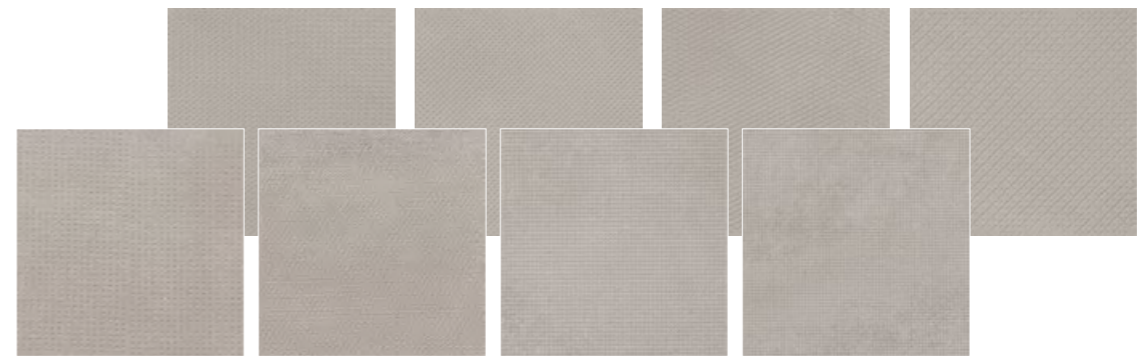
Decors | Decors | Dekore | Decorados | Декоры

DECORO NEEDLE Naturale R10 Rett.



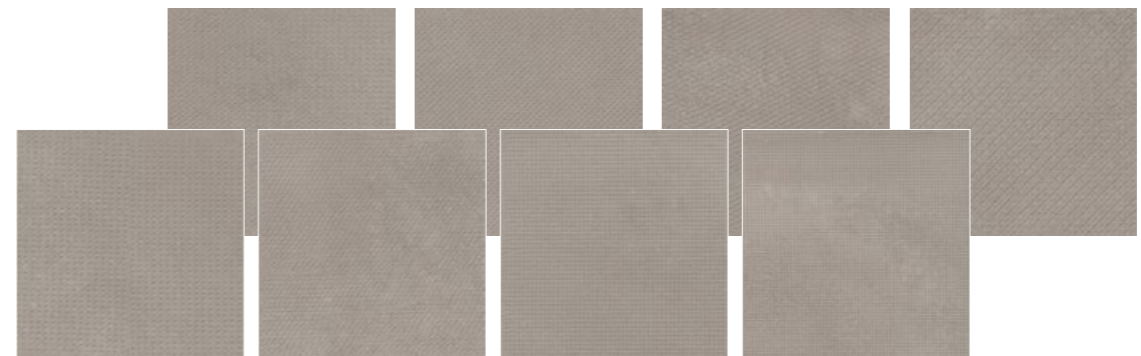
30x30 - 11¹³/₁₆"x11¹³/₁₆"
E45U White

● T75



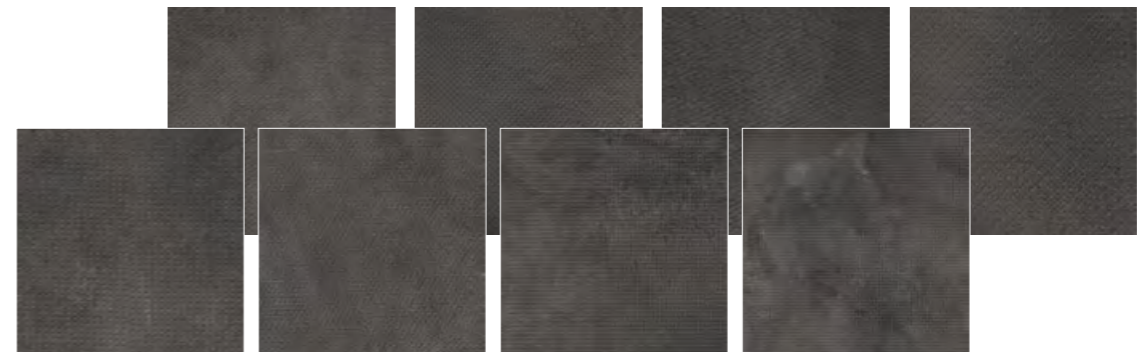
30x30 - 11¹³/₁₆"x11¹³/₁₆"
EAV3 Grey

● T75



30x30 - 11¹³/₁₆"x11¹³/₁₆"
E45X Smoke

● T75



30x30 - 11¹³/₁₆"x11¹³/₁₆"
EAV4 Black

● T75

PEZZI SPECIALI

Trims | Pieces Speciales | Formteile | Piezas Especiales | Специальные Изделия

Image	Dimensione Size	Color				Fascia di prezzo Price band				
		Ivory	Sand	Taupe	Brown					
	Concrete Nat. R10 Rett. 7x60 - 2 ^{3/4} "x23 ^{5/8} " Pcs. Box 15 - LM x Box 9,00	EAWP	EAWQ	EAWT	EAWS	● A11				
	Concrete Nat. R10 Rett. 4,6x90 - 1 ^{13/16} "x35 ^{7/16} " Pcs. Box 8 - LM x Box 7,20	EAYR	EAYS	EAYV	EAYU	● A18				
	Wood Nat. R10 Rett. 4,6x120 - 1 ^{13/16} "x47 ^{1/4} " Pcs. Box 6 - LM x Box 7,20	-	EAZ0	EAZ3	-	● A28				
	Concrete Nat. R10 Rett. 33x60 - 12 ^{15/16} "x23 ^{5/8} " Pcs. Box 6 - LM x Box 3,60	EC1D	EC1E	EC1H	EC1G	● A54				
	Wood Nat. R10 Rett. 33x120 - 12 ^{15/16} "x47 ^{1/4} " Pcs. Box 2 - LM x Box 2,40	-	EC1N	EC1R	-	● A82				
	Concrete Nat. R10 Rett. 33x60x3,2x3,2 12 ^{15/16} "x23 ^{5/8} "x1 ^{1/4} "x1 ^{1/4} " Pcs. Box 4 - LM x Box 2,40	EC0J	EC0K	EC0N	EC0M	● A68				
	Concrete Nat. R10 Rett. 33x120x3,2x3,2 12 ^{15/16} "x47 ^{1/4} "x1 ^{1/4} "x1 ^{1/4} " Pcs. Box 2 - LM x Box 2,40	EAZ7	EAZ8	EAZC	EAZA	● A98				
	Wood Nat. R10 Rett. 33x120x3,2x3,2 12 ^{15/16} "x47 ^{1/4} "x1 ^{1/4} "x1 ^{1/4} " Pcs. Box 2 - LM x Box 2,40	-	EAZH	EAZL	-	● A98				
	Concrete Nat. R10 Rett. 33x33x3,2x3,2 12 ^{15/16} "x12 ^{15/16} "x1 ^{1/4} "x1 ^{1/4} " Pcs. Box 2 - LM x Box 0,66	EC09	EC0A	EC0E	EC0D	● A72				
	Concrete Nat. R10 Rett. 33x120x3,2x3,2 12 ^{15/16} "x47 ^{1/4} "x1 ^{1/4} "x1 ^{1/4} " Pcs. Box 1 - LM x Box 1,20	Dx Right EAXM	Sx Left EAXN	Dx Right EAXP	Sx Left EAXQ	Dx Right EAXV	Sx Left EAXW	Dx Right EAXT	Sx Left EAXU	● A104
	Wood Nat. R10 Rett. 33x120x3,2x3,2 12 ^{15/16} "x47 ^{1/4} "x1 ^{1/4} "x1 ^{1/4} " Pcs. Box 1 - LM x Box 1,20	-	-	Dx Right EAY5	Sx Left EAY6	Dx Right EAYC	Sx Left EAYD	-	-	● A104

I pezzi speciali inclusi nel campo di applicazione della EN 14411:2016 presentano le stesse caratteristiche di superficie dei fondi di partenza. Trims within the scope of EN 14411:2016 have the same surface characteristics as the relative plain tiles.

IMBALLI E PESI

Packing and Weight | Emballages et Poids | Verpackung und Gewicht | Embalajes y Pesos | Упаковка и Вес

Formato Size Format Format Татаño Формат cm	Spessore Thickness Epaisseur Stärke Espesor Толщина mm	Pz. x Mq. Pieces x Sqm Pcs / M ² Stk. x Qm Pzs x Mc. Шт x Кв.М.	Pz. x Scat. Pieces x Box Pcs / Bte Stk. x Krt. Pzs x Caja Шт x Кор.	Mq. x Scat. Sqm x Box M ² / Bte Qm x Krt. Mc. x Caja Кв.М. x Кор.	Peso x Scat. Weight x Box Poids / Bte Gewicht x Krt. Peso x Caja Вес x Кор. Kg	Scat. x Pal. Boxes x Pal. Bte / Pal. Krt. x Pal. Cajas x Pal. Кор. x Подд.	Mq. x Pal. Sqm x Pal. M ² / Pal. Qm x Pal. Mc. x Pal. Кв.М x Подд.	Peso x Pal. Weight x Pal. Poids / Pal. Gewicht x Pal. Peso x Pal. Вес x Подд. Kg
90x180 Naturale R10	10	0,62	2	3,240	74,52	18	58,32	1341
120x120 Naturale R10	9,5	0,69	1	1,440	31,68	36	51,84	1140
60x120 Naturale R10	9,5	1,39	2	1,440	31,68	36	51,84	1140
20x120 Naturale R10	9,5	4,17	4	0,960	21,12	40	38,40	845
90x90 Naturale R10	9,5	1,23	2	1,620	35,64	24	38,88	855

PEZZI SPECIALI

Trims | Pieces Speciales | Formteile | Piezas Especiales | Специальные Изделия

Image	Dimensione Size	Color				Fascia di prezzo Price band				
		White	Grey	Smoke	Black					
	Concrete Nat. R10 Rett. 7x60 - 2 ^{3/4} "x23 ^{5/8} " Pcs. Box 15 - LM x Box 9,00	EAWN	EAWU	EAWR	EAWV	● A11				
	Concrete Nat. R10 Rett. 4,6x90 - 1 ^{13/16} "x35 ^{7/16} " Pcs. Box 8 - LM x Box 7,20	EAYQ	EAYW	EAYT	EAYX	● A18				
	Wood Nat. R10 Rett. 4,6x120 - 1 ^{13/16} "x47 ^{1/4} " Pcs. Box 6 - LM x Box 7,20	-	EAZ4	EAZ1	-	● A28				
	Concrete Nat. R10 Rett. 33x60 - 12 ^{15/16} "x23 ^{5/8} " Pcs. Box 6 - LM x Box 3,60	EC1C	EC1J	EC1F	EC1K	● A54				
	Wood Nat. R10 Rett. 33x120 - 12 ^{15/16} "x47 ^{1/4} " Pcs. Box 2 - LM x Box 2,40	-	EC1S	EC1P	-	● A82				
	Concrete Nat. R10 Rett. 33x60x3,2x3,2 12 ^{15/16} "x23 ^{5/8} "x1 ^{1/4} "x1 ^{1/4} " Pcs. Box 4 - LM x Box 2,40	EC0H	EC0P	EC0L	EC0Q	● A68				
	Concrete Nat. R10 Rett. 33x120x3,2x3,2 12 ^{15/16} "x47 ^{1/4} "x1 ^{1/4} "x1 ^{1/4} " Pcs. Box 2 - LM x Box 2,40	EAZ6	EAZD	EAZ9	EAZE	● A98				
	Wood Nat. R10 Rett. 33x120x3,2x3,2 12 ^{15/16} "x47 ^{1/4} "x1 ^{1/4} "x1 ^{1/4} " Pcs. Box 2 - LM x Box 2,40	-	EAZM	EAZJ	-	● A98				
	Concrete Nat. R10 Rett. 33x33x3,2x3,2 12 ^{15/16} "x12 ^{15/16} "x1 ^{1/4} "x1 ^{1/4} " Pcs. Box 2 - LM x Box 0,66	EC08	EC0F	EC0C	EC0G	● A72				
	Concrete Nat. R10 Rett. 33x120x3,2x3,2 12 ^{15/16} "x47 ^{1/4} "x1 ^{1/4} "x1 ^{1/4} " Pcs. Box 1 - LM x Box 1,20	Dx Right EAXK	Sx Left EAXL	Dx Right EAXX	Sx Left EAXY	Dx Right EAXR	Sx Left EAXS	Dx Right EAXZ	Sx Left EAY0	● A104
	Wood Nat. R10 Rett. 33x120x3,2x3,2 12 ^{15/16} "x47 ^{1/4} "x1 ^{1/4} "x1 ^{1/4} " Pcs. Box 1 - LM x Box 1,20	-	-	Dx Right EAYE	Sx Left EAYF	Dx Right EAY7	Sx Left EAY8	-	-	● A104

I pezzi speciali inclusi nel campo di applicazione della EN 14411:2016 presentano le stesse caratteristiche di superficie dei fondi di partenza. Trims within the scope of EN 14411:2016 have the same surface characteristics as the relative plain tiles.

IMBALLI E PESI

Packing and Weight | Emballages et Poids | Verpackung und Gewicht | Embalajes y Pesos | Упаковка и Вес

Formato Size Format Format Татаño Формат cm	Spessore Thickness Epaisseur Stärke Espesor Толщина mm	Pz. x Mq. Pieces x Sqm Pcs / M ² Stk. x Qm Pzs x Mc. Шт x Кв.М.	Pz. x Scat. Pieces x Box Pcs / Bte Stk. x Krt. Pzs x Caja Шт x Кор.	Mq. x Scat. Sqm x Box M ² / Bte Qm x Krt. Mc. x Caja Кв.М. x Кор.	Peso x Scat. Weight x Box Poids / Bte Gewicht x Krt. Peso x Caja Вес x Кор. Kg	Scat. x Pal. Boxes x Pal. Bte / Pal. Krt. x Pal. Cajas x Pal. Кор. x Подд.	Mq. x Pal. Sqm x Pal. M ² / Pal. Qm x Pal. Mc. x Pal. Кв.М x Подд.	Peso x Pal. Weight x Pal. Poids / Pal. Gewicht x Pal. Peso x Pal. Вес x Подд. Kg
60x60 Naturale R10	9,5	2,78	3	1,080	23,76	40	43,20	950
30x60 Naturale R10	9,5	5,56	6	1,080	23,76	48	51,84	1140
30x60 Listelli Sfalsati Naturale R10	9,5	5,56	4	0,720	15,80	30	21,60	474
30x30 Mosaico 3X3 Naturale R10	9,5	11,11	5	0,450	8,73	60	27,00	524
30x30 Dec. Needle Naturale R10	9,5	11,11	12	1,080	23,76	40	43,20	950